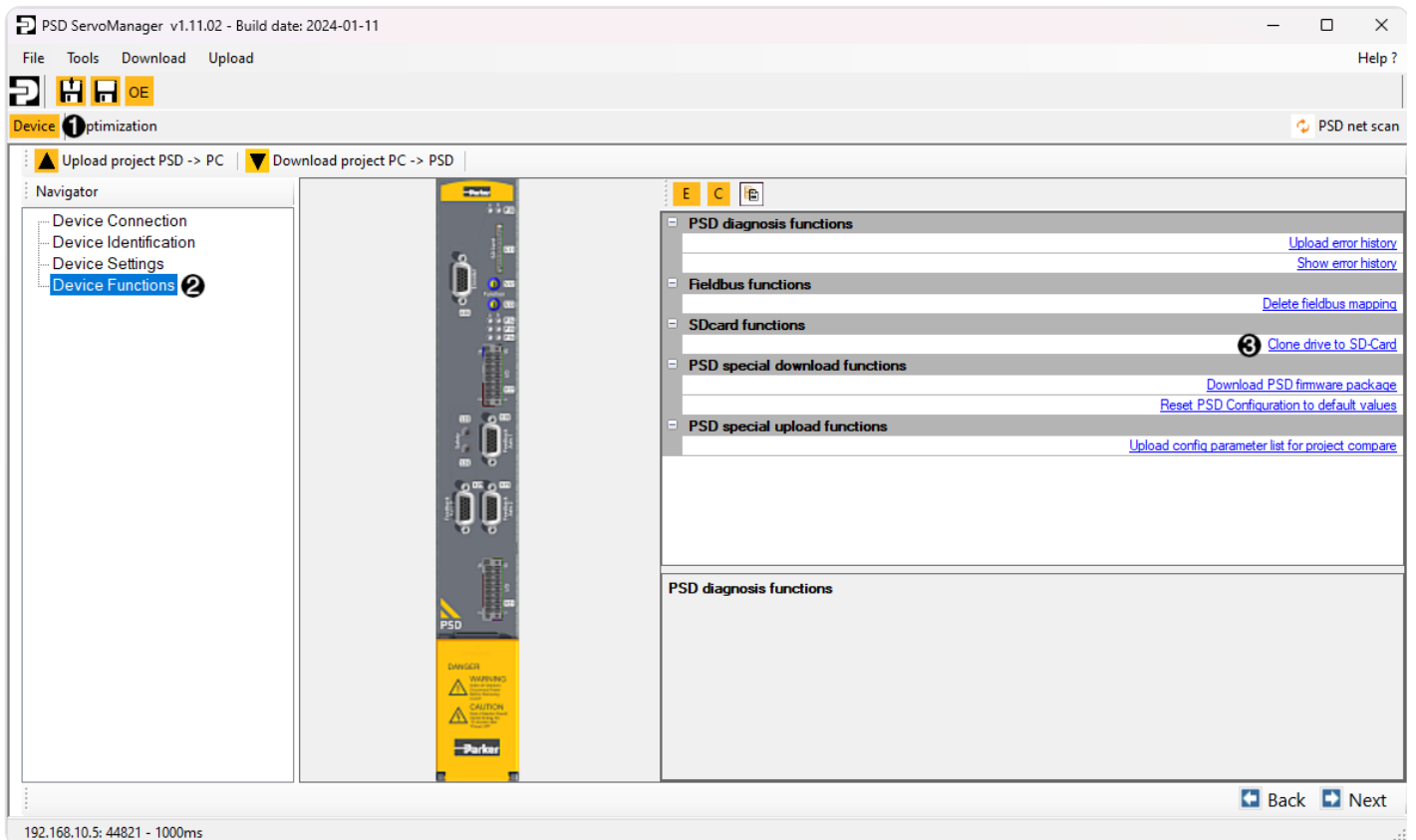


1. Cloning PSD

The cloning procedure involves exporting the PSD configuration to the SD card using the PSD Servo Manager.

1. Ensure that the source PSD and the target PSD have the same order code
2. Format the SD card to **FAT32** using the SD Memory Card Formatter software
3. Connect to the PSD using the PSD Servo Manager software
4. Ensure that the drive is **DISABLED**
5. Insert the SD card into the C11 slot located on the front of the PSD
6. In PSD Servo Manager, go to the *device* tab (1), select *Device Functions* (2) in the left column, and then choose *Clone drive to SD-Card* (3)
7. Complete the guided procedure



Revision #2

Created 2024-12-09 14:09:28 UTC by Davide Molino

Updated 2024-12-09 14:26:13 UTC by Davide Molino